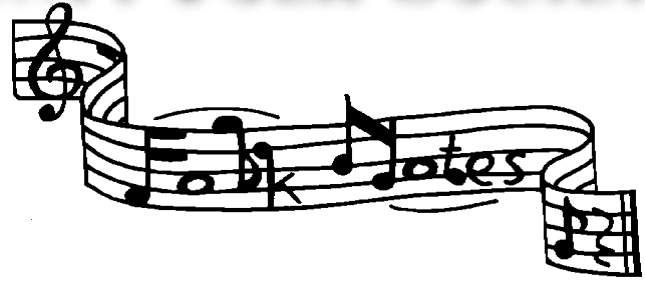


THE SONOMA COUNTY FOLK SOCIETY

November -
December 2011
Volume 16 No. 6



<http://www.socofoso.com>

Review: Claire Lynch Concert by Steve Hogle

On October 22, the Claire Lynch Band performed an evening of fine bluegrass music that can be summed up in a few words, soft, gutsy, strong and sweet! It's no wonder Claire was nominated as 2011 Female Vocalist of the Year by the International Bluegrass Music

Association. She has all of the qualities and charm you could hope to hear from such a talented singer. Matt Wingate on mandolin and guitar was superb, Jason Thomas had it all together with his masterful fiddle, and Mark Schatz kept them all in step with his fine bass, clawhammer banjo and Southern Appalachian clogging. If you stayed until the end, you'll always remember their incredible version of Wabash Cannonball that brought down the house!

The Sebastopol Community Center Annex is truly a wonderful place for these acoustic shows. Every seat in this intimate venue has a good view of the stage without feeling crowded. The Annex is such a good place for music that we encourage you to keep a lookout for more upcoming shows being presented by The Sonoma County Folk Society and Kevin Russell.

WE WISH ALL OF OUR
FRIENDS AND MEMBERS
PEACE AND JOY FOR THE
NEW YEAR.

HAPPY HOLIDAYS



Happy Thanksgiving

"MUSIC FOR LIFE" Program

The Folk Society would like to introduce you to a wonderful program that benefits abused and neglected children through Sonoma County's Valley of the Moon Children's Home.

The goal of these Music For Life volunteers is to collect used, treasured musical instruments, especially if they are not being played anyway.

They will "recycle" wind instruments, brass, acoustic and electric guitars, small drums and more, passing them on to children who can really use something as special as music in their lives.

If you can part with a musical instrument, send a note to:

MusicForLifeProgram@yahoo.com, or just call Pat at 707-321-2369 or Cindy at 707-322-0999 for a pick-up. Thank you for considering this wonderful cause!

What's Inside

REVIEW Claire Lynch	1
REVIEW The Unlikely Duo. 2	
Cloverdale Fiddle Festival ...	2
Jim Hurst-Rob Ickes Event..	4
UPCOMING EVENTS	4
The next Pickin' Potluck	4
Pick'n Potluck Recipes	4
On the Air KRCS & KRSH..	5
Lessons · Lessons · Lessons	5
Acoustic Music Jams	6
Dance Dance Dance	6

Review:

The Unlikely Duo concert

By Janet Dove

Most of the SOCOFOSO Board of Directors and many other "folkies" showed up for Carey Dubbert's October 16th concert at the all-new Occidental Center for the Arts. The music and the venue both were superb!

Carey's set list was so well thought-out! He gave us lots of variety: instrumentals, vocals, solos, duets, trios, fast tunes, slow ones, funny anecdotes, classical pieces, breathtaking songs . . . marvelous! He played lots of hammered dulcimer and strummed tunes on several different autoharps. We knew Carey was talented, but this was spectacular! His autoharp friends commented that it was so nice to hear him do a full concert, instead of just a 30-minute set, the common experience at autoharp festivals.

His autoharper friend Ron Bean came up from San Francisco to join Carey on several tunes, and they were joined by Ann McChesney-Young on her accordion. She's a show-stopper on her own, but this particular trio of musicians was great!

Also on the bill with Carey was Brendan Buss, who played two different saxophones. I have heard their music before, because they recently recorded a C.D. together, but their live performance was even better! My favorite numbers featuring the two of them actually featured Brendan playing the penny whistle. Great combination!

The audience was large, and we all benefited by the special price on OCA's Sunday locals' series: \$5 admission! Our own folk society set up a membership information table at the back of the hall, and made some new friends as a result. We became friends with the president and other "brass" from the Occidental Center for the Arts. Both of our organizations are eager to work together on future concerts, benefits, and other shared activities. The venue (a remodeled grammar school auditorium) is gorgeous inside, with lots of local craftsmanship obviously in place. The foundation sells coffee, tea, beer, wine and homemade cookies during the breaks in their concerts. Check out their website at occidentalcenterforthearts.com

So, thank you, Carey, for your stellar performance, and also for introducing us to this classy venue! In addition to your music, the gift of your generous spirit and smile were bright and well-received.

FOLK NOTES

Published bi-monthly, 6 times a year
Sonoma County Folk Society
P o Box 9659 Santa Rosa CA 95405-9659
For information, call 707-542-3798
<http://www.socofoso.com>

Reaching out to our SoCoFoSo members



Your Sonoma County Folk Society is asking for your help with some of our events. In particular, we need some volunteers to help us set up and close the Pickin' Potlucks at Subud Hall in Sebastopol. We will be hosting five potlucks in 2012: Jan 29, Apr 29, July 29, Sept 30, Dec 30. The help starts an hour before the get together, 12:00 PM and an hour or less afterward and it includes setting up & breaking down chairs & tables, "manning" the membership table, "leading" the big jam in main hall, setting out food, cleaning up and making sure the hall is very tidy when we leave. The Folk Society has a great relationship with Subud Hall. We get a good rate on the rental so all we can do to make them happy with us continues our welcome there.

Please won't you consider volunteering some time with us and help make SoCoFoSo even better.

You'll really feel good about it! Call 542-3798 to help out

The 36th Cloverdale Fiddle Festival

January 21-22, 2012

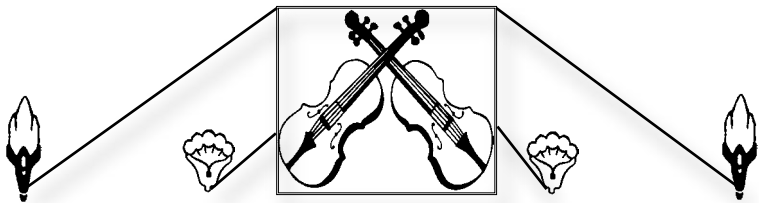
Citrus Fairgrounds, Cloverdale CA



The 36th Cloverdale Fiddle Festival will be held at the Citrus Fairgrounds in Cloverdale this coming January 21-22, 2012. This is news unto itself. Were it not for the timely support of Lagunitas Brewery in Petaluma the event would have met its demise in 2011. We have them to thank again for their support in 2012. With a fresh approach this year the fiddle festival will be back better than ever.

Not just a fiddle contest anymore, the Cloverdale Fiddle Festival is a benefit for the Cloverdale Historical Society. The expanded format will include performances by old time and bluegrass bands, workshops, and a dance on Saturday night. Some of the performers include Special Consensus (Sunday), an internationally known bluegrass band celebrating its 35th year, from Ohio and led by founder banjoist Greg Cahill. Old time banjoist and singer Debbie McClatchy, the old time sounds of the Cobb Stompers from, big surprise, Cobb Mtn., the Hicktones from Petaluma and a fine up-and-coming bluegrass outfit from the Santa Cruz area, Bean Creek.

cont. page 3



36th Annual



**Saturday, January 21 and
Sunday, January 22, 2012**

CLOVERDALE CITRUS FAIRGROUNDS

For more information contact the Cloverdale Historical Society at
(707) 894-2067

or visit : www.cloverdalehistory.org & www.cloverdalefiddles.com

This year will again feature the “Jamming Stage” where slots will be left open in between scheduled performers for local pickers to play. We will also be featuring a Charlie Poole banjo workshop with Debbie McClatchy and for the first time, a slow jam for beginning pickers both Saturday and Sunday.

Then there is the fiddle contest. The past few years have seen the rise of quite a number of fine young fiddle players in the age groups from 8 to 18, this year will be no exception. Many have moved on to the professional ranks, including Megan Lynch with country music star, Pam Tillis’ band, to name one.

Expect be the usual array of fine craft vendors and great food. Overnight RV camping is available. It’s a terrific family event. Admission is \$12.50 per day or \$20 for a two day pass. For further information go to www.cloverdalefiddles.com, or hogiemoon@comcast.net and by phone, 707-894-2067 or 707-829-8012.



SHUBB

INTELLIGENTLY ENGINEERED FOR THE
DISCERNING MUSICIAN

WWW.SHUBB.COM

707-843-4068

Editor’s Eye

essays correspondence books
scholastic & newsletters

Laurie Reaume

(707)869-9230

lauriereaume@pon.net



Please check your Membership expiration date !

If your expiration date says November 2011 or before then we really need you to RENEW your membership to the Sonoma County Folk Society. Memberships are the line of financial support that we count on to make this all possible! What it means to you is that, with your current membership, we can continue to present events such as the Annual Bluegrass and Folk Festival in March, the 5th Sundays at Subud Hall, the mini concerts during the year and yes, even this newsletter. You won’t receive a reminder so, please keep an eye on the label each issue. Please help out and support the music that we all enjoy with your membership, and even consider giving a GIFT membership to a friend for the holidays. Remember, members enjoy discounts on concert tickets too.

Membership form on page 5.

Thank you from the SoCoFoSo!



THE LAST
RECORD STORE

1899 A MENDOCINO AVE
SANTA ROSA CA 95401

PHONE (707) 525-1963

WWW.LASTRECORDSTORE.COM



STUDIO E
A Sonoma County Favorite

Quality Recording,
Mastering, Production,
DVD and Video Services

Flexible rates for
all types of projects
707.823.5316
jeffm5@sonic.net

PUT IT ON YOUR CALENDARS!

**THE NEXT SoCoFoSo
PICKIN' POTLUCK
is Sunday January 29th**

**SUBUD HALL
234 HUTCHINS AVE,
SEBASTOPOL**

1:00 P.M. TO 5:00 P.M.

For details call: 542-3798

**MUCH PICKIN'
MUCH POTLUCKIN'
MUCH FUN!**



The Kathy Kallick Band

Sunday Nov. 20, 7 pm

French Garden Restaurant

8050 Bodega Ave., Sebastopol 707-824-2030

OCCIDENTAL CENTER FOR THE ARTS

Presents:

(Bohemian Hwy. & Graton Rd., Occidental)

Sunday, November 20, 4 pm

WILLIAM FLORIAN'S "Those Were The Days"

Former lead singer of the famous 60's group, The New Christy Minstrels
An upbeat, energetic, musical journey of Americas greatest folk pop and
rock songs of the 60's, Peter Paul & Mary, Pete Seeger, Mamas & The
Papas. Uplifting originals, presented with amusing stories in an intimate show.
A special tribute to John Denver! ONLY \$10!

**For details and reservations for all shows:
707-874-9392 or www.occidentalcenterforthearts.com/
Tickets: brownpapertickets.org**

**Blue & Lonesome
aka Ed Neff & Friends**

Bluegrass with some of the Bay Area's finest musicians:

Ed Neff on mandolin, Paul Shelasky on fiddle,
Mike Wilhoite on guitar, Larry Cohea on banjo
and Jeff King on bass.

Thursdays, 6:30 - 10:00 pm

Willowbrook Ale House, 3600 Petaluma Blvd. North
Petaluma 707-775-4232



Jim Hurst & Rob Ickes in Sebastopol!

Jim Hurst has won IBMA's Guitar Player of the Year twice.
Rob Ickes carried off the IBMA award for Dobro Player of the
Year a stunning thirteen times! For the first time, these two
instrumental titans have teamed up for what is surely
some of the most interesting & innovative music
in the history of acoustic music.



Saturday, December 10th · 7:30pm - 10:30pm

Tickets: \$20 in advance, \$25 at the door

Sebastopol Community Center Annex

425 Morris St. Sebastopol, California

Contact Kevin @ 707-824-1858 or krussellmft@aol.com

co-sponsored by The Sebastopol Community Center

NEWS FLASH! Earlier that day, Rob and Jim will offer
separate 2-3 hour workshops for guitar & dobro. For the last
30-45 minutes they combine to discuss and demonstrate
working in the duo in band settings and behind singers.

Time: 1-4pm, Cost \$80, Place: TBD

Contact Kevin ASAP - 707-824-1858 or krussellmft@aol.com

Pick'n Potluck Favorite Recipes

Pear Cake (folks LOVE this easy cake)

- 1/2 cup vegetable oil
- 1 tsp cinnamon
- 1 cup sugar (can use less)
- 1 cup flour
- 1 egg
- 1/2 tsp salt
- 2 cups chopped fresh pears (can also use apples, peaches,
etc)
- 1 tsp vanilla
- 1/2 tsp baking soda
- if using pears, add a pinch or 2 of nutmeg
chopped walnuts (optional)
- Mix oil & sugar, add egg & mix.
- Add remaining ingredients.
- Bake in greased 8" x 8" pan @ 350 for 45 minutes.
- No frosting needed..... especially good with a scoop of
vanilla ice cream or frozen yogurt. Enjoy!!!

Lessons • Lessons • Lessons

◇ Fiddle Lessons: Contra and Square dance styles, Celtic, Scandia and other International styles by ear and reading with music theory, Janette Duncan 707-570-2745

◇ Lessons in guitar, old time banjo, piano and beginning accordion. With Ingrid Noyes, in Marshall, on the shores of Tomales Bay. For details: 415-663-1342 or e-mail ingrid10@sonic.net

◇ Kay Eskenazi loves to teach guitar, Folk, Blues, Jazz, Bossa Nova, Fingerstyle, Celtic and Classical styles. 707/869-9642 service@WomensHeartsAndHands.com

◇ Music lessons at your location: note reading, theory, piano instruction for all ages. Laurie 707-869-9230

◇ Steve Wharton teaches Bluegrass: banjo, Old Time banjo, dulcimer, and autoharp For details, 707-887-2518.

◇ Learn to play Polish fiddle
Nanette Fynan 707-569-0565

◇ Play the String Bass: lessons in Sebastopol
Bill Amatneek 707-824-8084

◇ Mandolin lessons with Phil Lawrence in Sebastopol
All Styles--All Levels
(707) 824-1198 or email: phlawrence53@yahoo.com
phillawrence.com



On the Air KRCB:



Our own NPR Station at 91.1 or 90.9 FM

Great programs, some of particular interest to folkies...

◇ Mondays: 8:00 to 10:00 PM

• **Your Average Abalone**, hosted by Johnny Bazzano, 1st and 3rd.

• **The Fiddling Zone**, hosted by Gus Garelick, Old Time fiddling, Bluegrass, Cajun, Swing, Klezmer and more 2nd and 4th.

◇ Tuesdays: 10:00 to Midnight

• **Crossing Borders**, World music

◇ Thursdays: 8:00 to 10:00 PM

• **Freight Train Boogie**, hosted by Bill Frater, Roots, Country, Folk, Blues, Rock etc.

◇ Saturdays: Noon to 1:00 PM

• **Thistle and Shamrock**, Celtic music

◇ Saturdays 1:00 to 5:00 PM

• **Our Roots Are Showing**, hosted by (*alternating hosts*) Robin Pressman and Steve DeLap. Folk, Acoustic, Singer-songwriter, Blues, Bluegrass



On the Air KRSH:

95.9FM

◇ **"Krush Uncorked"** Sundays 8-11 AM. Singer-songwriter acoustic and unplugged music with Bob Sala

◇ **"Krush Americana"** Monday evenings 7:00 to 10:00 PM. Old n' new twang, Country, Americana and Roots Music with Bill Bowker

SoCoFoSo.com Website Help Wanted

Do you have website skills?

The Sonoma County Folk Society would like some help with adding a couple of features to our website, and with making it more flexible for featuring one-time events. We want the site to be more useful to all of you! This could be a one-time "job" OR we'd love to have you help on a regular basis. Contact Steve DeLap, 707-542-3798 if you are willing to spend a little time on this project. Thank you!



JACKALOPE RECORDS
Full Service Recording Facility

Doug Jayne
jayne@sonic.net

(707) 696-1100
Santa Rosa, California

Sonoma County Folk Society

Membership Application

Please fill out and mail: - \$10.00 Individual - \$15.00 Family Make checks payable to SoCoFoSo.

2 Year special membership \$17.50 Individual - \$25.00 Family NEW RENEWAL

Mail to: SoCoFoSo, PO Box 9659 Santa Rosa CA 95405

(Please print)

Name

Address

City

State

ZIP

Phone

EMail

comments:

Membership begins and ends in the month you join or renew.

Contributions to the Sonoma County Folk Society are tax deductible to the extent permitted by law.

Acoustic Music Jams :

• THE REDWOOD CAFE

8240 Old Redwood Hwy, Cotati

◇ The Celtic Sessions, led by Janette Duncan

and Roxanne Oliva

Second Sunday of the month from 4 to 6 PM.

For details call: 585-3138

◇ Old Time Jam

Hosted by Janette, Steve and Chris

4th Sunday of the month, 4 to 6 PM. Details, 570-2745

• MAIN ST. STATION RESTAURANT

16280 Main, Guerneville

◇ Slow Celtic Sessions

1st and 3rd Wednesdays, 7 to 9 PM,

For details call: 869-0501

• COFFEE CATZ

6761 Sebastopol Ave, Sebastopol,

On Hwy 12 at the Train Station, east end of town.

Check it out every Saturday afternoon from 2 to 5 pm.

Everyone is welcome at this CBA hosted event!

Mark Hogan is a great host.

◇ Old-time, bluegrass, old country.

For more information, contact Mark Hogan at:

hogiemoon@comcast.net or call 829-8012

• MURPHY'S IRISH PUB

464 First St Sonoma

◇ First Sunday of the month, 3:30 - 5:30, celtic jam

For details call 935-0660



• BLUEGRASS AND OLD-TIME JAM

◇ The 4th Wednesday of every month,

7-9pm at Aquas Café in Petaluma

For info and details: 415-706-1997 or

murphyjohn2008@yahoo.com

• BLUEGRASS JAM.

◇ 1st & 3rd Tuesday of every month,

7pm - 9pm, Subud Hall 234 Hutchins, Sebastopol

Intermediate to advanced jam. Hosted by "Uncle" Dave Carlson

707-843-5181

• UKULELE JAM.....Sunday afternoons--2:00-4:00 PM

Come join us for fun, jamming and singing.....Old Time, Folk, Country and Gospel. All skill levels are welcome.

For details: 707-829-8867 or nastche@sonic.net



Singer's Circle...

◇ Meets 4th Friday of most months. For information call Dennis Drury at 829-0883.

Dance Dance Dance...

• DANCE AWAY

◇ Contra and English dancing every weekend! Live music, lessons and callers. For detailed info contact: NBCDS Dance Line (707) 527-9794 or www.nbcds.org or email: info@nbcds.org

• APPLE TREE MORRIS

◇ Weekly in Sebastopol. Information: 829-3478 or kalia@sbcglobal.net



Sonoma County Folk Society
PO Box 9659
Santa Rosa CA 95405-9659

• NEXT DEADLINE FOR ARTICLES •
December 10th
To Steve: steves32@sonic.net



Printed on recycled paper